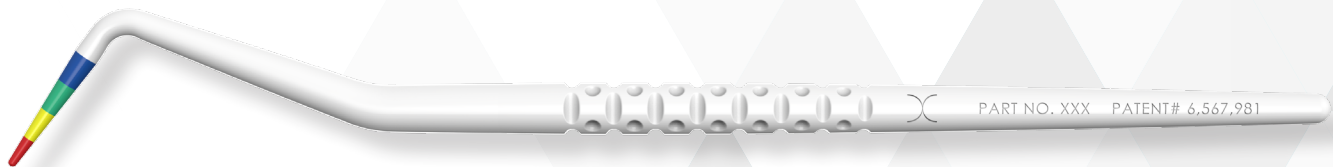


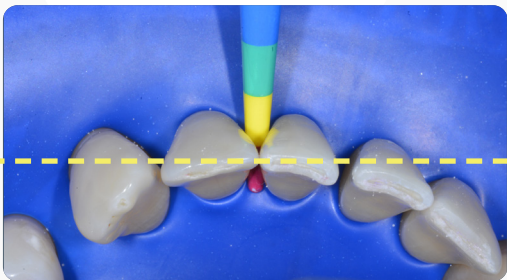


 BIOCLEAR



INSTRUCTIONS

BLACK TRIANGLE SYSTEM INSTRUCTIONS



1. GAP SIZING

Insert the **BT Gauge** (included in the Black Triangle (BT) Kit) under the contact into the black triangle space from facial to lingual until gauge binds.

Look from the occlusal to see which color matrix to use. The incisal edges are a good reference. If the gauge is in between colors, use the matrix with the smaller amount of curvature (see the Curvature Guidelines on the back of the instructions)

Decide if the tooth is small or large, and then choose the appropriate colored matrix in that size

- **Small:** mandibular incisors, or small maxillary lateral incisors
- **Large:** All other teeth - maxillary incisors, maxillary canines, mandibular canines, and bicuspsids



2. DISCLOSE AND CLEAN

Use **Bioclear Dual Color Disclosing Solution** (included in the Black Triangle (BT) Kit), then blast or traditionally clean until all biofilm is removed.



3. CONTACT OPTIMIZATION

Use the blue, orange, and red **TruContact Saws and Sanders** (included in the Black Triangle (BT) Kit), in order, to clean contact and to manage tension of contact as needed.



4. MATRIX INSERTION

Insert the appropriate paired matrices as determined by the **BT Gauge** and the Sizing Guidelines on the back page.



5. ETCH AND RINSE

Etch the entire tooth for 20 seconds, rinse, and dry.



6. ADHESION, INJECTION MOLDING, LIGHT CURE BUCCAL AND LINGUAL, RELEASE MATRIX, FINISH

- After adhesion, injection mold the tooth with flowable and/or regular paste composite into the matrices.
- Cure the composite from buccal and lingual.
- Completely release the matrices from the teeth by running a **Clark Explorer (C1)** (not included) between matrix and tooth. Use a hemostat to grab and remove matrix.
- Finish the restoration

SIZING AND CURVATURE GUIDELINES

Using paired matrices, curvature (indicated by color) closes spaces up to:

-  Pink – 1 mm space
-  Green – 2 mm space
-  Yellow – 1.5 mm space
-  Blue – 2.5 mm space



“Small Incisor” BT Matrix Tub: For mandibular incisors and small maxillary lateral incisors



“Large Incisor” BT Matrix Tub: Are taller and wrap the tooth more than the Small Incisor BT Matrices. They should be used for maxillary central incisors, large maxillary lateral incisors, maxillary and mandibular canines, and maxillary and mandibular bicuspid.

CLEANING & STERILIZATION

BT Gauges and **TrueContact Saws and Sanders** are reusable and autoclavable. Wash with soap and water using a soft brush to remove debris. Sterilize using steam sterilizers only on the regular cycle.

- **Note:** do NOT use sprays or wipes, this could damage the BT Gauge
- **Note:** temperature of sterilizer should NOT exceed 270° F/132° C

INCLUDED IN YOUR KIT

TruContact Saws and Sanders

Use TruContacts in order: blue, orange, red.

- Blue: Saw
- Orange: Light Sander, Single-sided
- Red: Heavy Sander, Double-sided

Bioclear Dual Color Disclosing Solution

- Apply to thoroughly dry teeth using a brush applicator.
- Let sit and then rinse. Newer plaque stains pink.
- Plaque older than 24 hours and cracks stain purple.

 **BIOCLEAR**

855.712.5327 ▲ BIOCLEARMATRIX.COM