

Measure the Black Triangle

Insert the Bioclear™ Black Triangle (BT) Gauge from both buccal and lingual to assess black triangle space and select the same colored matrix to close the space. Use the incisal edge as a reference to determine the matrix color needed. *Lingual insertion not pictured.*



Sand and Optimize Your Contacts

Contacts should be sanded with the TruContact sander series. Start with the blue (*contact optimizer*), then orange (*fine diamond single-sided sander*), then red (*coarse double-sided sander pictured here*). This allows matrices to seat fully as the point-contacts naturally present in many cases impede matrix seating.



Place Rubber Dam

Rubber dam utilization is a key to success. A heavy latex or non-latex dam retracts the soft tissue and helps to stabilize the matrices apically. A rubber dam is helpful to avoid overhangs during injection molding.



Use Dual-Color Disclosing Solution

Paint the Bioclear Dual-Color Disclosing Solution on the dried teeth to make the Biofilm visible for more thorough removal. This is performed only once and on all teeth to be treated.



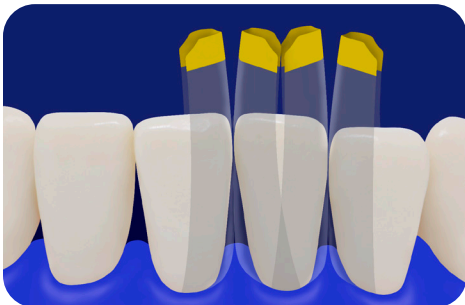
Rinse the Teeth

Rinse the excess Bioclear Dual-Color Disclosing Solution off the tooth using water.



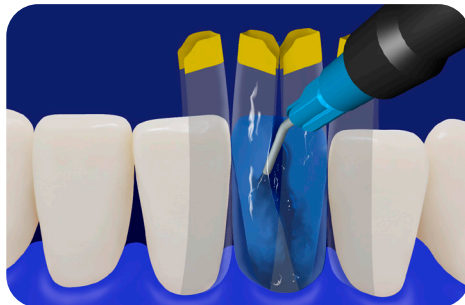
Blast Away Remaining Biofilm

Blast the entire tooth from all directions to remove the biofilm and protein pellicle. Removing these contaminants mechanically is necessary because the phosphoric acid, which will be applied next, does not effectively remove these materials.



Place Primary and “Shield” Matrices

When treating multiple black triangles in an arch, it is recommended to injection mold one tooth at a time. In this case the #24 tooth is treated first, and the matrices present on #23 and #25 are acting as “shield” matrices. They can subsequently be used as active matrices when the next tooth is injection molded.



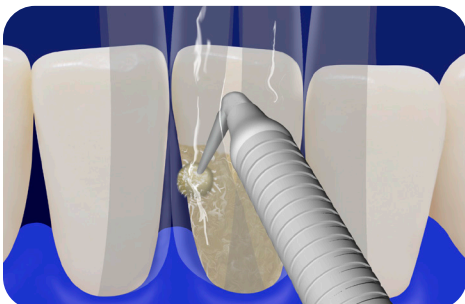
Place Acid Etch

Acid etch the tooth for 10 seconds with 3M™ Scotchbond™ Universal Etchant Etching Gel which is a 32% phosphoric acid.



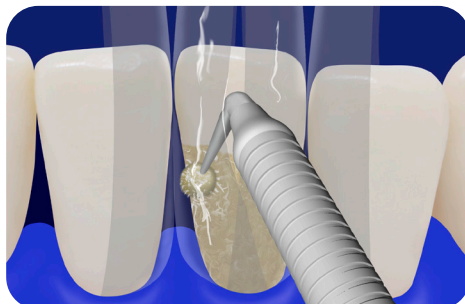
Rinse Acid Etch

Rinse thoroughly and dry the tooth.



Place Adhesive

Always apply and cure a first layer of 3M™ Scotchbond™ Universal Plus Adhesive when dentin is present. When bonding to enamel only, apply a generous amount of adhesive but do not light cure.



Place Adhesive (continued)

If dentin is present, and after the adhesive has been light cured, place a second layer of adhesive on the treatment area but do not light cure.

∞ BIOCLEAR

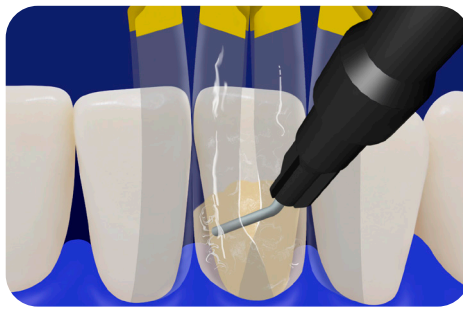
BIOCLEARMATRIX.COM

Refer to manufacturer instructions for use (IFU) for complete product information.



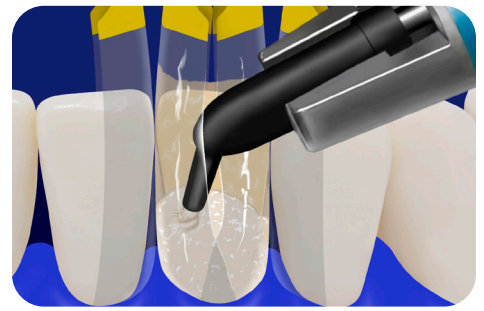
Air Thin Adhesive

Air thin the adhesive but do not light cure.



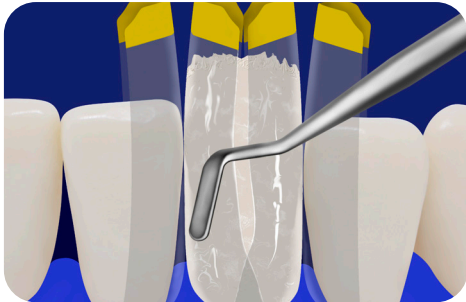
Inject Warmed Flowable Composite

Inject warmed 3M™ Filtek™ Supreme Flowable Restorative. Make sure to displace most of the uncured adhesive which is acting as a surfactant. Purposeful injection with warmed flowable composite is key to success. Repeat from the lingual direction (not pictured). Do not light cure.



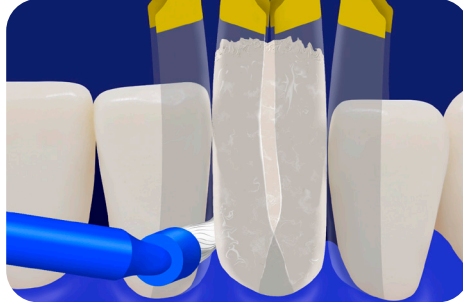
Inject Warmed Paste Composite

Next, inject warmed 3M™ Filtek™ Supreme Ultra Universal Restorative paste composite from the facial aspect to displace much of the flowable composite.



Re-adapt Matrix Closer to Tooth

When indicated, re-adapt the matrix closer to the tooth to tease out excess composite. When the system has been properly pressurized with composite, the matrices are often overly expanded on the facial aspect and should be gently re-adapted.



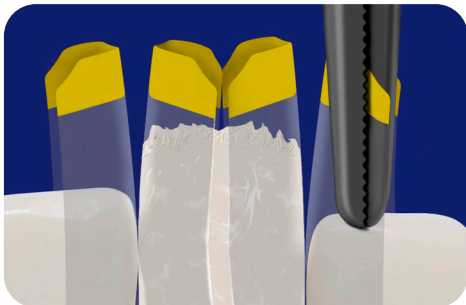
Remove Excess Flowable

Blot away excess flowable composite that may be present on the outside of the matrices especially in the interproximal areas.



Light Cure Entire Injection Area

Light cure for 10 seconds from the facial, lingual, and incisal edges to ensure complete polymerization of the composite.



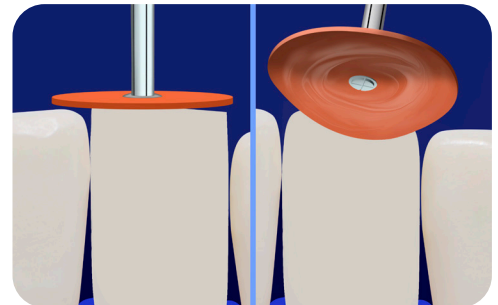
Remove "Shield" Matrices

First remove the inactive or "shield" matrices from the incisal direction. Set aside for use as active matrices. Use a strong instrument for matrix removal, such as the Bioclear Hemostat.



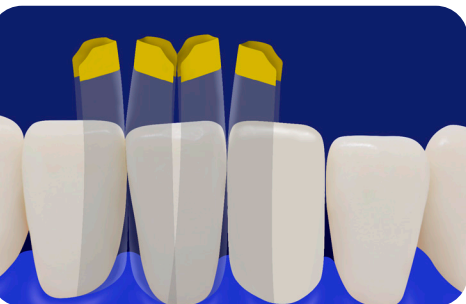
Section Excess Composite

Remove excess composite with Komet USA's coarse diamond bur 6862.FG.014 from the Bioclear Komet Kit LD2253. This cutback should be performed dry with only air coolant to optimize the speed and safety of the cutback. Cut 1 mm from the tooth surface in a clean cut.



Finishing the Composite

Final excess is removed and the natural enamel is carefully "discovered" with the 3M™ Sof-Lex™ Extra-Thin Contouring and Polishing Disc in either the standard placement in madre (left) or inverted placement (right).



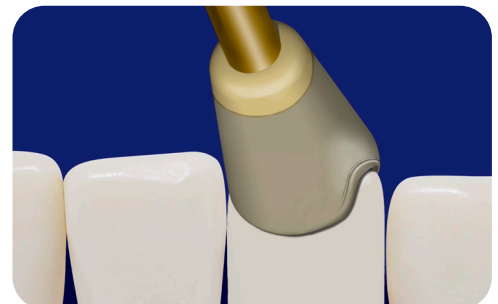
Proceed to Next Tooth in Restoration

Place matrices on #25 tooth and repeat steps beginning with "Place Acid Etch".



Magic Mix Pre-Polish

Pre-Polish is finalized with the Magic Mix paste applied with the designated disposable rubber cup. Make sure to run the paste and cup over all surfaces, including subgingival, incisal, and interproximal areas. Then remove excess Magic Mix paste with water spray.



Rockstar Polish

The Bioclear RS Polisher Cup is used with light pressure in the dry phase and then heavy pressure in the wet phase. To avoid overheating the tooth, blow a gentle air stream during the dry phase and constant, full air-water during the wet phase.