

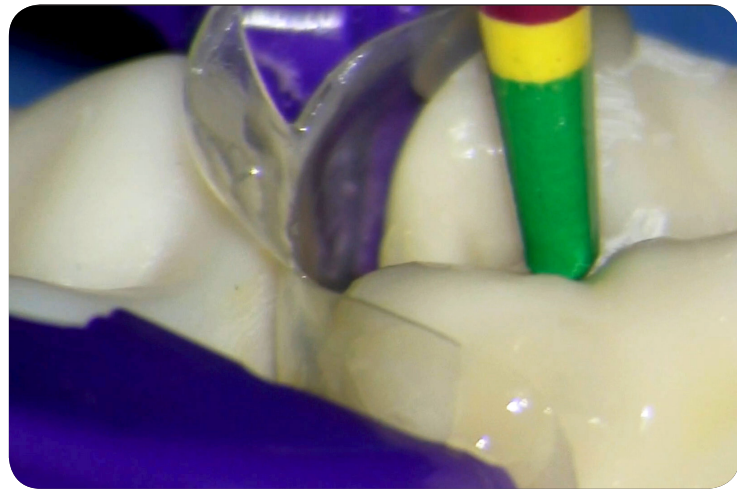


BIOCLEAR

INSTRUCTIONS FOR USE

Go/No-Go Polisher

Insert the probe after the Biofit Matrix has been placed and find on which color the marginal ridge will fall after composite has been injected to see if the restoration is a “Go” or “No-Go” and use the key below to decide how to proceed:



● **GREEN = GO:** the composite will be less than 4mm and, if necessary, can be cured from the occlusal only



● **YELLOW = GO WITH CONDITIONS:** the composite will be between 4mm and 5mm and can be fully cured **ONLY** if you have access at the interproximal and can 3-point cure (curing from the buccal, lingual, AND occlusal) with a clear matrix



● **RED = NO-GO:** the composite will be deeper than 5mm
Tip: To solve this problem, put down 1 or 2mm of flowable composite at the bottom of the prep, cure it, and then injection mold with bulk fill as per usual (effectively making restoration less shallow by putting 1 layer down)

CLEANING & STERILIZATION INSTRUCTIONS

Go/No-Go Probes are reusable and autoclavable

CLEANING

- Rinse Go/No-Go thoroughly after use to avoid debris drying and hardening
- For any remaining debris, wash with a mild soap, such as dish-soap, using a soft brush to remove the remaining debris
 - » *Note: do NOT use sprays or wipes, this could damage the Go/No-Go Probe*

STERILIZATION

- After cleaning, sterilize using steam sterilizers only on the regular cycle
 - » *Note: temperature of sterilizer should NOT exceed 270°F/132°C*

STORAGE

- Instruments should be stored in a clean, dry location, out of direct sunlight

OTHER NOTES

- Chemical sterilization should not be used. The warranty will be void if chemical sterilization is used
- Instruments are not shipped sterile and should be steam autoclaved prior to initial use
- Instruments should be inspected prior to each use. If delamination, other discoloration, or damage occurs, use of that instrument should be discontinued
- Do not wipe or soak instruments with harsh chemicals such as acetone or high concentrations of alcohol – this may damage the instruments and will void the warranty if used

 **BIOCLEAR**

855.712.5327 ▲ ▲ ▲ BIOCLEARMATRIX.COM